



GLOBAL LEADERSHIP EXPERIENCE | 2024

20TH JULY - 3RD AUGUST 2024

AGES 15 - 17



EXPERIENCE



The Global Leadership Experience brings together passionate and aspirational young people from all around the world to explore the challenges shaping your planet and our future, whilst taking you on a journey towards becoming the changemakers and innovators to address these challenges.

Learning to lead, building critical thinking and decision-making skills and developing a global perspective to help create change in yourself is a good thing. Using those skills to generate ideas for social impact and be an advocate for positive change in the world - that is a great thing. The Global Leadership Experience is your chance to bring it all together.

In a 12th Century castle by the sea in Wales, every day is packed with new experiences - from exploring the complex systems of the world (why some work and why others simply don't) to developing your own answers to the BIG ethical, social, environmental, political, geographic and economic questions that impact the lives of everyone. Through thought-provoking workshops, insightful discussions and comfort stretching outdoor activities, you will be invited to develop the 21st Century leadership needed at a global, local and personal level.



Tom Partridge
Head of UWC Atlantic Experience
UWC Atlantic



“Develop leadership, insight and experience; challenge your way of thinking to help you choose the best way forward; experience life at UWC Atlantic and make lasting friendships.”

Tom Partridge
Head of UWC Atlantic Experience

PROGRAMME THEMES

The Global Leadership Experience seeks to build a community of young thinkers and doers from across the globe committed to developing the leadership needed for a sustainable and just future. The programme is designed to support participants in answering 3 key questions:

WHAT is the leadership we need?

By looking at different models of leadership, we will explore the types of leadership that are needed to create a fairer and more sustainable world. As leadership is more than the ability to motivate and control, we will explore and practise how values, skills of empathy and collaboration, and systems thinking can help you develop your own model of what a good leader can be.

WHO is the Leader I am becoming?

Through activities steeped in experiences you will be challenged to explore what comprises your identity, your values, your passions and your strengths. You will begin to uncover your personal style of leadership and develop the leader that lies within you.

HOW can I lead to make a positive difference?

We will dive into the global challenges that we are currently facing: from climate change to gender inequality, and poverty to sustainability. We will take a systemic view to investigate the root causes, and the resulting impacts at local and global levels. In doing so, you will better be able to identify the issues that you most deeply care about and your motivation to influence change - your why!



PROGRAMME AIMS

The Global Leadership Experience aims to challenge participants to:

Learn from each other (in a transformative process) by stretching our comfort zone to include new ideas and experiences.

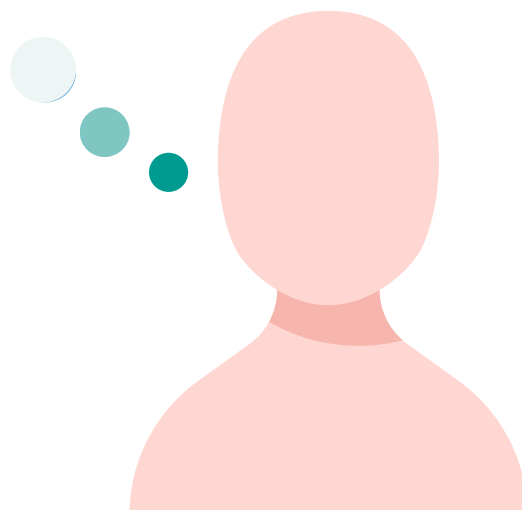
Engage in critical conversations about our personal and collective identities in relation to places and systems.

Acquire aptitudes and attitudes for empathy, meaningful communication and innovative collaboration.

Dare to challenge preconceived ideas about one self and others to foster a sense of resiliency, assertiveness and accountability.

Expand the meaning of leadership to include the personal values and motivations that will guide our unique changemaker journey.

Recognise one's role and responsibilities in building a more sustainable future for our planet and diverse societies.

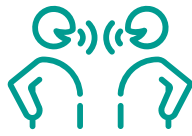




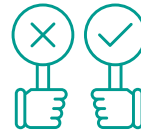
PROGRAMME COMPONENTS



Thought-provoking experiential workshops



Inspirational talks from global social and sustainability leaders



Dynamic debates with peers from diverse cultural backgrounds



A practice of personal reflections through small 'Umbrella' groups



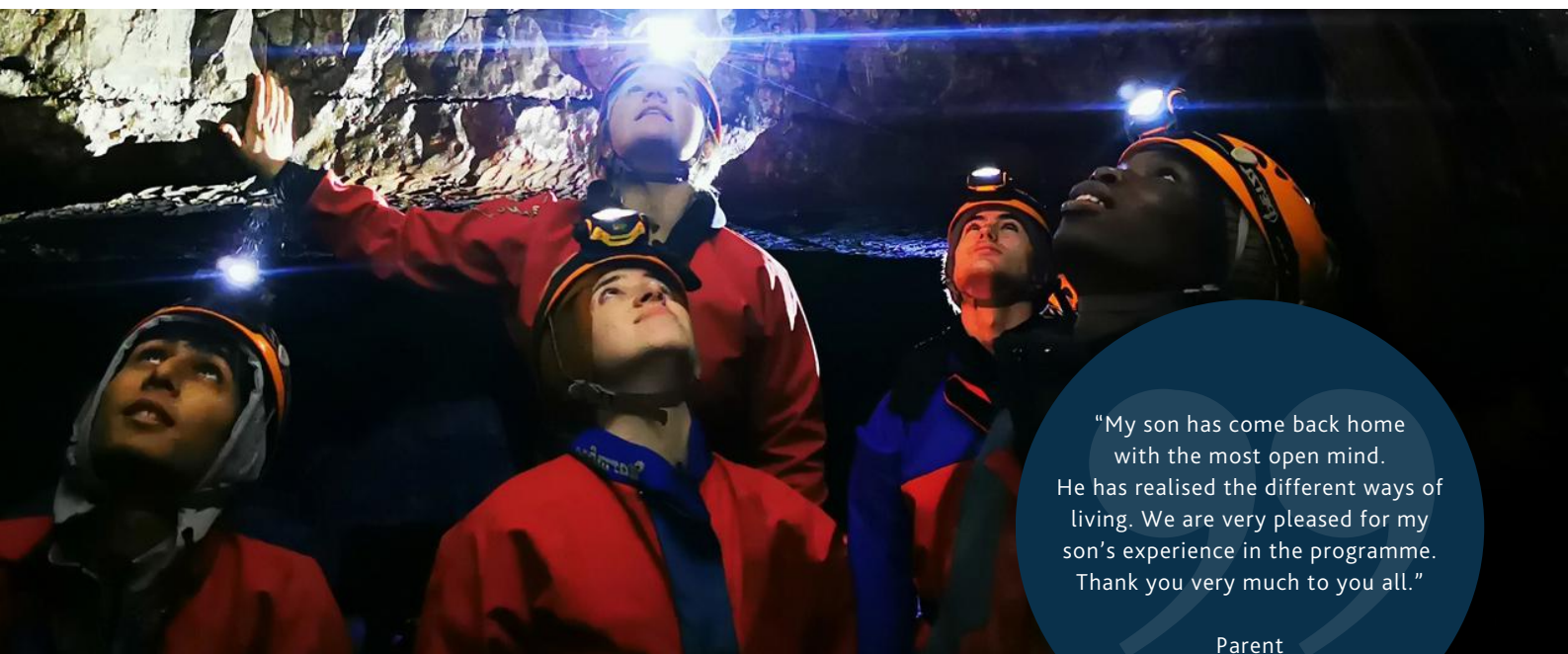
Challenging outdoor adventures immersed in nature



Excursions to learn from the local social, political and natural history



Fun games, sports, and activities to relax, bond, and grow



"My son has come back home with the most open mind. He has realised the different ways of living. We are very pleased for my son's experience in the programme. Thank you very much to you all."

Parent

EXPERIENTIAL LEARNING FOR LEADERSHIP DEVELOPMENT

Critical Exploration


Through experiential education designed and delivered by Critical Engagement CIC, you will have the chance to develop strong foundations for critical thinking and personal engagement with issues of identity, diversity and social responsibility. Through a variety of different workshops and activities, you will explore what makes you the person and aspiring leader that you are, how this can shape your changemaking ambitions and what leadership is fit for the future world you envision.

Leadership in Action and Reflection

The greatest lessons are learnt from practice and reflection. You will have the chance to directly practice what you learn by taking a lead in shaping and delivering sessions and events throughout the week – from evening games to a participant-led camping trip. In order to draw out your personal learnings, you will be part of a smaller Umbrella group. Guided by a facilitator, you will have the opportunity to reflect upon the day's activities, alone and together, to more deeply understand your own personal journey.

Outdoor Adventures

Drawing upon the resources that the beautiful surroundings offer, you will be challenged to develop your leadership skills through creative and exciting outdoor adventures. You will work as a team to navigate the caves of South Wales, learn to forage in the wild, learn basic survival skills and apply it all during a 2-day hike and campout. This experience will (safely) push you beyond your comfort zone as you work together with your peers to overcome fears whilst discovering your strengths and potential.



"Umbrella groups were my favourite part of the whole experience. This was a space which allowed us to be ourselves and it made us think about everything that was happening during each day. The experience wouldn't be full without them."

Former participant

INSURANCE

As part of GLE, international students living outside of the UK will benefit from GuardMe COVID specific insurance as part of the course fee, to provide additional cover for COVID related cancellation.

The policy provides cover for participant cancellation in the event of:

- Having a positive case of COVID at the start date of the course, prohibiting them to join. Cover provided is up to the value of £7,500
- COVID medical cover up to £10 million
- Flight and accommodation cover for participant and guardian should they be required to isolate in the UK and/or fly to the UK to provide care



APPLICATION DETAILS

COURSE INFORMATION

The course will be held at UWC Atlantic from Saturday 20th July to Saturday 3rd August 2024. Applications are open to 15-17 year olds. GLE is delivered in English, therefore all participants must be able to communicate in the English language.

FEES

£2,695 GBP per person, includes all boarding, catering, activity fees and GuardMe insurance. Price is also inclusive of optional transfer to/from Heathrow Airport. The fee does not include flights, participant spending money, visa fees or travel costs outside of the transfers.

SUPPLEMENTS

Additional charges that you may incur as a fee to GLE are as follows:

- If you plan to use the unaccompanied minor airline service a fee of £75 GBP per person applies to cover the additional staffing requirements
- If you have unexpected changes to travel a fee of £200 GBP per person plus additional transport costs (i.e. taxis) applies

50% SCHOLARSHIPS

The capacity of GLE is 50 participants of which up to 10 places offer financial assistance of up to 50% of the course fee (£1,347.50). If you require this financial assistance please ensure you complete the scholarship application form. Please note scholarship places are limited and very competitive so it is recommended you only apply via the scholarship route if you cannot fund the full course fee. You cannot apply to both and the application cannot be transferred.

HOW TO APPLY

If you're interested in joining the Global Leadership Experience and aged 15-17 years old, please apply via the application form found here: www.uwcatlanticexperience.com/gle.


The application form will ask you more about why you want to develop your global leadership skills. Application deadline is Sunday 31st March 2024.

BOOKING DEADLINE

Applications must be received by 11.59pm on Sunday 31st March 2024. Late applications will not be considered.

Applications are reviewed together after the closing date and all applicants will be notified if their application is successful by the end of April 2024. An invoice will be sent out at the time of confirmation and you must be able to pay the invoice at this stage. Please contact us if you require a payment plan.

 [APPLY](#)



UWC Atlantic
St Donat's Castle
Vale of Glamorgan
Wales, UK
CF61 1WF

www.uwcatlanticexperience.com/gle
gle@uwcatlanticexperience.com